

AGENDA SUPPLEMENT (2)

Meeting: Marlborough Area Board

Place: Marlborough Town Hall, 5 High St, Marlborough SN8 1AA

Date: Tuesday 14 May 2019

Time: 7.00 pm

The Agenda for the above meeting was published on 3 May 2019. Additional documents are now available and are attached to this Agenda Supplement.

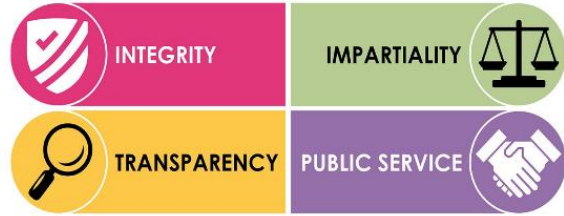
Please direct any enquiries on this Agenda to Tara Shannon, of Democratic Services, County Hall, Bythesea Road, Trowbridge, direct line 01225 718352 or email tara.shannon@wiltshire.gov.uk

Press enquiries to Communications on direct lines (01225)713114/713115.

This Agenda and all the documents referred to within it are available on the Council's website at www.wiltshire.gov.uk

6 **Partner Updates** *(Pages 1 - 10)*

DATE OF PUBLICATION: 10 May 2019



AREA BOARD MEETING: MARLBOROUGH

MARLBOROUGH POLICE OFFICERS:

- Inspector 1068 Chris Martin – Inspector Wiltshire East - 1068@wiltshire.pnn.police.uk
- PS 2334 Pete FOSTER – Deputy Sergeant Wiltshire East - 2334@wiltshire.pnn.police.uk
- PC 2802 Beth BUTWELL - Co-ordinator Wiltshire East - 2802@wiltshire.pnn.police.uk

MARLBOROUGH POLICE COMMUNITY SUPPORT OFFICERS



PCSO 6188 Melissa CAMILLERI: MARLBOROUGH
6188@wiltshire.pnn.police.uk



PCSO 7712 Emily SYKES: MARLBOROUGH
7712@wiltshire.pnn.police.uk



PCSO 6035 Mark BRIATHWAITE: MARLBOROUGH
6035@wiltshire.pnn.police.uk

NEWLY APPOINTED COMMUNITY CO-ORDINATOR

We are fortunate enough to be able to welcome a new Community Co-ordinator who will be covering the Wiltshire East area. You may have already seen her at community engagements however, for those who haven't PC Beth BUTWELL is looking forward to meeting and getting to know everyone.

Beth served as a Special Constable within Gloucestershire Constabulary for five years before joining Wiltshire Police as a Police Community Support Officer based in Swindon Town Centre. Beth remained as a PCSO for two years and became a Police Officer covering Devizes, Marlborough and Pewsey in 2016.

NEWLY APPOINTED POLICE COMMUNITY SUPPORT OFFICER:

We are also fortunate enough to welcome a new Police Community Support Officer who will be covering the Marlborough area. PCSO Chahida BOUTARFAS is currently being tutored by PCSO Emily SYKES and is excited to be starting her operational duties soon.

CURRENT PRIORITIES WITHIN YOUR AREA:

- **Anti-Social Behaviour: Priory Gardens, Marlborough**

It is essential that we tackle anti-social behaviour (ASB) within our community.

ASB is defined as, “Acting in a manner that caused or was likely to cause harassment, alarm or distress to one or more persons not of the same household.”

ADVICE:

Please report any behaviour as defined above to 101 so that we can effectively manage and deal with the perpetrators responsible.

- **Rural Crime – Hare-coursing and Beauty Spot Thefts**

It is imperative that we maintain a high visible presence within our rural county. Wiltshire as a whole is a rural county with numerous beauty spot/sights for tourists and visitors to explore. The isolation of these areas make thefts from cars quite common, especially in the summer months. In MARLBOROUGH we have experienced an increase in vehicle crime/theft related issues at both our local beauty spots and other rural locations.

ADVICE:

- Before you leave home, think about what you need and leave any unnecessary items of value at home
- Make sure you do not leave documents which have your personal details on in your vehicle.
- Try to park in sign-posted parking areas
- Be cautious about parking your car in isolation. Thieves can be put off when other people are around
- Do not leave anything in your vehicle. A jacket or coat left behind may be of very little value to you, but a thief may think it has been used to hide a laptop or handbag and will break into your vehicle to find out
- Take items with you rather than locking them in the boot, you can't be sure who has seen you
- Do not leave your sat-nav in your vehicle and don't forget to remove the cradle and wipe the sucker marks from your windscreen
- Remember to shut all windows and sunroofs and lock all doors. Activate the alarm and immobiliser
- Make use of any security products you might have such as steering locks
- Whilst enjoying the sights make sure you keep your bag and possessions with you
- Register all your valuables on [the Immobilise website](#)

To report a theft to us call 101 our non-emergency number. If a crime is in progress call 999.

- **Vehicle Crime– Community Speed Watch/Drink Driving**

Keeping our roads safe is extremely important within our area as we have several A Roads that pass through MARLBOROUGH. We receive fortnightly updates from our Community Speed Watch Teams with specific areas to target. It is important that we work with the general public to identify unsafe road users within our county.

ADVICE:

Please report any driving that you consider to be unsafe directly to 101 with the vehicle registration details. We may not be able to prosecute these individuals however, words of advice can certainly be given as a deterrent.

Burglaries:

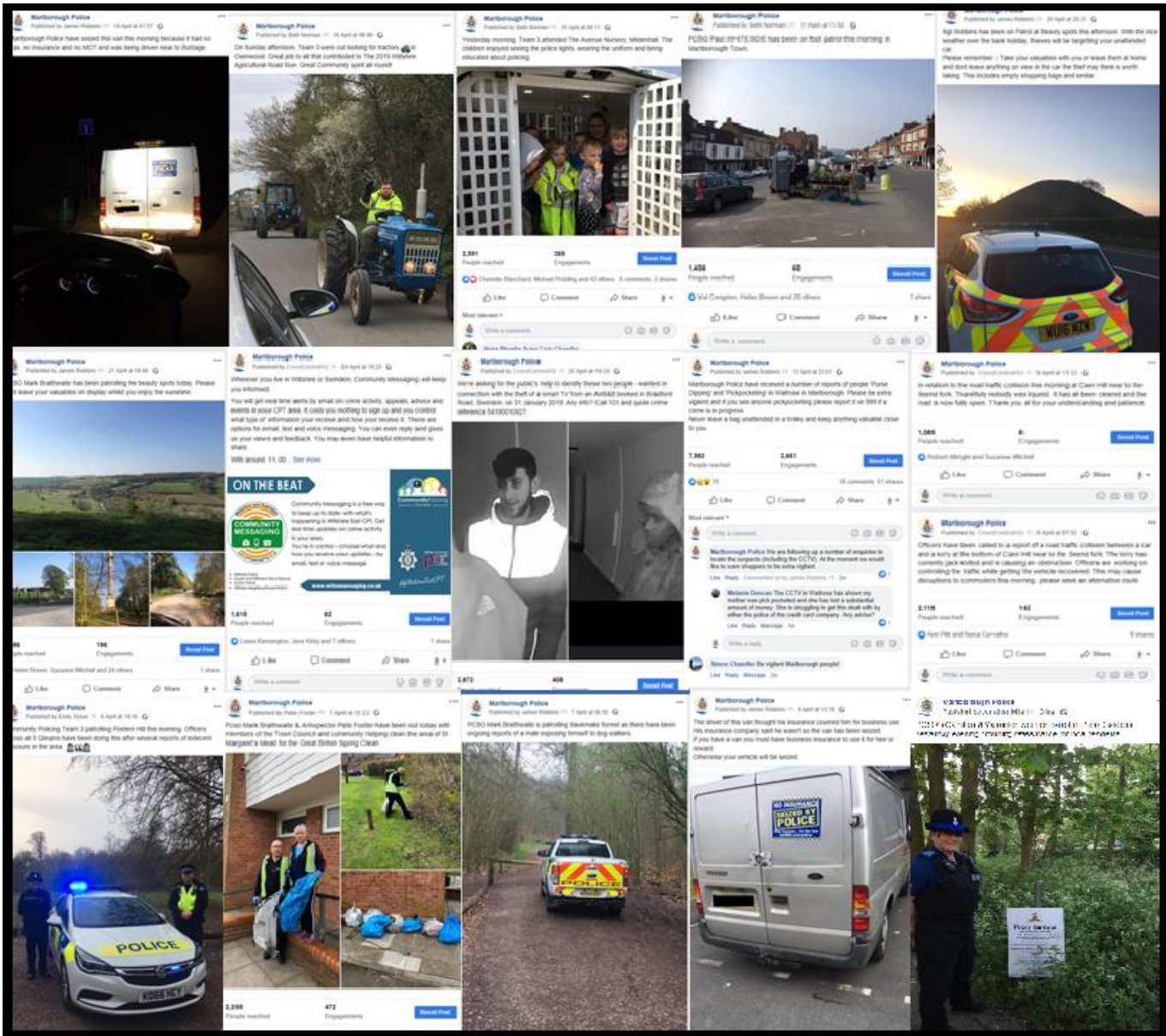
Although burglaries is not a current priority for your area, we are still receiving reports of burglaries occurring. In some cases the suspects are breaking into the houses in order to steal jewellery, money and vehicle keys. We encourage everyone to be vigilant and report any ongoing suspicious activity to 999. To improve the security in and around your home we are asking residents to remember the following advice:

- Lock your doors and windows every time you leave the house, even if you're in the garden, and make sure you have approved locks or bolts on all doors and windows
- Never leave a spare key in a hiding place like in a plant pot or letterbox - a thief knows all the hiding places
- Keep all keys, purses and wallets out of sight and away from the letterbox
- Consider installing a burglar alarm, and only use a company that is registered or certified with the NSI or the SSIAB
- Do not open the door to anyone you don't know or are not expecting. Always check by using a spy-hole or look through a window
- Make sure that you have up to date contents insurance
- Register all serial numbers from electrical items, tools and garden equipment with Immobilise.com (the free national property register). Mark items without serial numbers with an artificial DNA property marker such as Smartwater or SelectaDNA
- Do not keep large amounts of cash at home - it is much safer in a bank or building society
- Trim back any plants and hedges at the front of your property to no higher than 1 metre to remove hiding places
- Always report any suspicious activity, note any vehicle registrations, descriptions of persons involved and direction of travel
- Use a timer to set lights to mimic your usual activity when you are not at home

- Take photographs of all jewellery including hallmarks and keep them safe. Also consider using an artificial DNA property marker on jewellery or other valuable items
- Make sure any bolts are low enough so they cannot be opened by reaching over the top of the gate.

OUR MEDIA COMMUNICATION WITH YOU:

As you may have seen over the last month both our PC's and PCSO's have been active on all forms of Social Media. Our PC's and PCSO's have been keeping you updated of their patrols and community engagements. PC 2802 Beth BUTWELL has also been updating you on a weekly basis of the ongoing reported crimes occurring with your area.



If you wish to receive the updates please visit Facebook <https://www.facebook.com/wiltshirepolice/>

Or sign up to Community Messaging <https://www.wiltsmessaging.co.uk/>

CRIME STATISTICS WITHIN MARLBOROUGH:

- Vehicle Crime:

There has been 17 reported incidents of vehicle crime since 1st April 2019

- Drugs:

There has been 3 reported incidents of drug related activity since April 2019

- ASB:

There has been 7 reported incidents of ASB related activity since 1st April 2019

- Criminal Damage:

There has been 7 reported incidents of Criminal Damage since 1st April 2019

- Theft:

There has been 14 reported incidents of Theft since 1st April 2019

- Burglary:

There has been 3 reported burglaries since 1st April 2019.

MARLBOROUGH AREA BOARD REPORT MAY 14th, 2019

Safe & Well visits

The Fire Service continue to offer Safe & Well visits to residents and if you or someone you know is in need a working smoke alarm to be fitted or needs some fire safety advice in the home or are just worried about what to do in an emergency then you can contact us at; <http://www.dwfire.org.uk/safety/safe-and-well-visits/>

We will arrange for one of our trained advisors or fire crews to pop round and discuss your requirements and needs, give you some top tips for fire safety within the home and if you meet our criteria for free smoke alarm installation we will also do that during the visit.

Marlborough Fire Station have a proactive Facebook account and I would encourage everyone to follow the station by searching for Marlborough Fire Station on Facebook. The page is updated to show incidents the station has attended, training sessions and community events where crews will be attending.

For more information on Thatch fire safety visit:

<http://www.dwfire.org.uk/wp-content/uploads/2018/05/DWFire-Thatched-Living.pdf>

Test your smoke alarm – we are running a #Testit Tuesday campaign to remind people to check their smoke alarms every Tuesday. It takes seconds to push the button and make sure this vital piece of kit is working.

Response

Total Emergency Calls for Marlborough Fire station; 02/03/2019 – 01/05/2019

Category	Callsign	Total Incidents
False Alarm	55P1	9
Fire	55P1	8
Other	55P1	0
Special Service	55P1	5
P2	55P1	0
Total		22

Availability of On-Call appliance 55P1:

Appliance	Day	Night	Total
55P1	63.48%	69.02%	66.25%

Total Emergency Calls for Ramsbury Fire station; 02/03/2019 – 01/05/2019

Category	Callsign	Total Incidents
False Alarm	53P1	1
Fire	53P1	3
Other	53P1	
Special Service	53P1	1
Water Carrier	53W1	2
Total		7

Availability of On-Call appliance 53P1:

Appliance	Day	Night	Total
53P1	26.93%	88.9%	57.92%

The reduced figures during the day are attributed to possible course attendance as part of a Firefighters requirement to maintain competence, personnel taking annual leave or due to fulltime work commitments where individuals work outside of the town and cannot supply us cover.

On-Call Recruitment

As the Availability table shows, crewing of your appliances falls below our ideal expectations of 100%. We continue to strive and improve on the number of personnel at each station through our recruitment process, so we can increase the number of hours our appliances are available for call outs.

The local appliances are only available to attend calls due to the commitment given by those who live and work within your community.

If you can give some of your time or know someone who may be interested in joining our 'On-call' teams then why not pop into one of the stations on a Monday evening between 7pm and 9pm. Crews are not volunteers but are paid a salary to train and respond to emergency calls. Check out our website: www.dwfire.org.uk for more information or contact us on our recruitment hotline: 01722 691444

RECRUITING NOW!

 01722 691444
  dwfire.org.uk

 Or pop in on our training evening



DORSET & WILTSHIRE
FIRE AND RESCUE

PASSIONATE ABOUT
CHANGING & SAVING LIVES



**DORSET & WILTSHIRE
FIRE AND RESCUE**

Water Safety

NFCC Water safety w/c April 29th.



**JUST GOING
FOR A RUN**
Runners and walkers are the group with
the **highest incidence** of accidental drowning
in the UK



**IF THEY'RE OUT OF REACH
THEY'RE NOT IN SAFE HANDS**
Supervise children closely and carefully in
and around water



Incidents of note

One incident of note – a multi appliance Thatch fire in Milton Road, Pewsey.

Community Safety Plan

Our Community Safety Plan is our vision until 2022 and can be found on the DWFRS website; <http://www.dwfire.org.uk/community-safety-plan/>

Dave Adamson
Station Manager East Wiltshire (Marlborough, Ramsbury, Pewsey & Ludgershall)
Dorset & Wiltshire Fire and Rescue Service
Five Rivers Health & Wellbeing Centre
Hulse Road, Salisbury, SP1 3NR
Mobile: 07734483892
www.dwfire.org.uk
@DWFRSDaveAdamson

